

**Veterinary Dentistry
and Oral Surgery**
of New Mexico, LLC

DENTAL FRACTURE TYPES

AS DEFINED BY THE AMERICAN VETERINARY DENTAL COLLEGE
<http://www.avdc.org/Nomenclature.pdf>

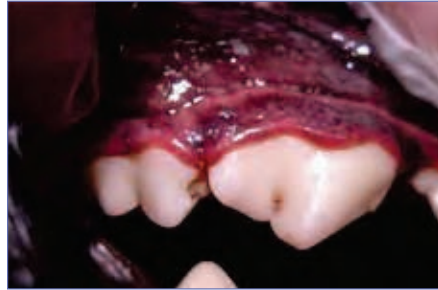
Enamel Infraction (EI)

An incomplete fracture (crack) of the enamel without loss of tooth substance.



Enamel Fracture (EF)

A fracture with loss of crown substance confined to the enamel.



Uncomplicated Crown Fracture (UCF)

A fracture of the crown that does not expose the pulp.



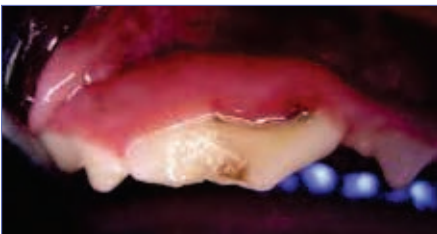
Complicated Crown Fracture (CCF)

A fracture of the crown that exposes the pulp.



Uncomplicated Crown-root Fracture (UCRF)

A fracture of the crown and root that does not expose the pulp.



Complicated Crown-root Fracture (CCRF)

A fracture of the crown and root that exposes the pulp.



KRIS BANNON, DVM
DIPLOMATE, AVDC
FELLOW, AVD

VETERINARY DENTISTRY & ORAL SURGERY OF NM, LLC

5 Camino Karsten • Algodones, NM 87001

Tel: (505) 471-0747 • Fax: (800) 646-9352

referrals@vetdentistrynm.com

www.vetdentistrynm.com

Root Fracture (RF)

A fracture involving the root.

